

# PLANUM

HIGH DEFINITION ON EACH PIECE



**Specially designed for low pitch roofs down to 10°**

- ✓ Double interlocking flat clay roof tile for perfect waterproofing.
- ✓ Quick and easy installation.
- ✓ Slate aesthetic and excellent flatness.

**La Escandella**

ROOFING THE WORLD

# PLANUM

## Specially designed for low pitch roofs down to 10°

Planum tile is a double interlocking flat clay roof tile available in a large range of colours.

Fittings and clay accessories have been designed for a quick and secure installation.

Planum tiles are manufactured using the most modern technology that allows us to give a product warranty of 100 years.

### Technical characteristics

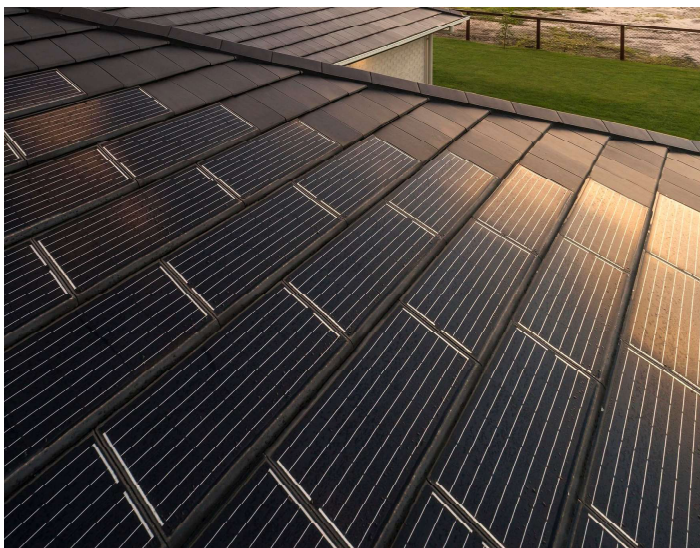
Dimensions	L: 444 mm W: 280 mm H: 32 mm
Pieces/ m <sup>2</sup>	11
Weight piece/ m <sup>2</sup>	3.5 kg/ 38.5 kg
Batten gauge	370 mm (+/- 6mm)
Covering width	237 mm (+2mm /-1mm)
Min. roof pitch	10°
Battens req. per m <sup>2</sup>	2.65 lin. mtrs

\*The dimensions indicated in this chart allow a tolerance of approximately +/- 2%.

\*\* Theoretic value: this should be re-calculated on site with the tiles that are to be used.



## Colour Range



**La Escandella**  
ROOFING THE WORLD